

# ChIPComp: A novel statistical method for quantitative comparison of multiple ChIP-seq datasets

Li Chen, Chi Wang, Zhaohui Qin, Hao Wu

October 17, 2016

## Contents

---

<b>1</b>	<b>Introduction</b>	<b>1</b>
<b>2</b>	<b>Overview</b>	<b>1</b>
<b>3</b>	<b>Example</b>	<b>2</b>
<b>4</b>	<b>Session info</b>	<b>4</b>

## 1 Introduction

---

This vignette introduces the use of the Bioconductor package ChIPComp, which is designed for differential binding sites analyses based on high-throughput sequencing data. The core of ChIPComp is a new procedure to incorporate the control sequencing data in a linear model framework. ChIPComp focus on analyzing the DBS ( transcription factor binding or histone modifications ) generated by peak-calling software between two treatment conditions. Since an increasing number of ChIP experiments are investigating the same type of binding event (protein-DNA binding or histone modification) under different treatment conditions (cell lines), ChIPComp is to address how significant difference each binding site is between two treatment conditions by considering the control sequencing data. Compared with existing methods, ChIPComp provides excellent statistical and computational performance. Currently, ChIPComp only supports the situation when replicates are available for each treatment condition.

## 2 Overview

---

Here below is the ChIPComp work flow

- 1. Detect binding sites:* The first step is to detect binding sites (transcription factor binding or histone modifications) for each ChIP sequencing data using existing peak-calling software.
- 2. Merge binding sites:* Binding sites from all replicates in two treatment conditions are merged into one set of binding sites. In the process, common binding sites are also recorded.
- 3. Count reads:* Both ChIP read counts and smoothing control read counts are calculated for each merged binding site.
- 4. Perform Hypothesis testing:* We fit the model and perform hypothesis testing on each merged binding site.

### 3 Example

---

To utilize the ChIPComp software, we need a data frame that represents the ChIP experiment information. We also need a design matrix retrieved from ChIP experiment to fit the linear model. ChIPComp provides two ways to obtain the configuration data frame and the design matrix.

The first way is to enter ChIPComp experiment information into one csv file as an input for function `makeConf`. The configuration data frame and design matrix are the output of `makeConf`, for example,

```
> library(ChIPComp)
> confs=makeConf(system.file("extdata", "conf.csv", package="ChIPComp"))
> conf=confs$conf
> design=confs$design
```

Another way is to define a configuration data frame and design matrix manually, for example,

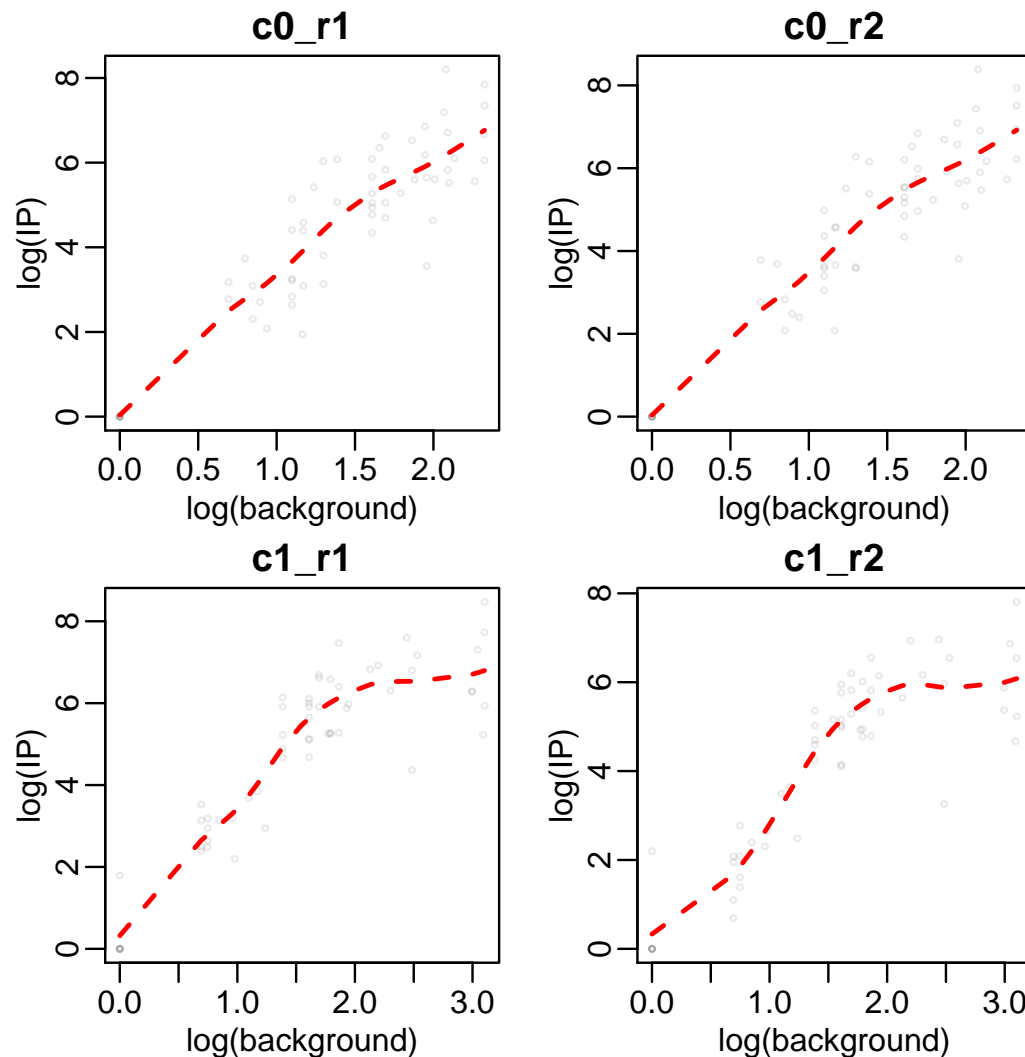
```
> conf=data.frame(
+ SampleID=1:4,
+ condition=c("Helas3", "Helas3", "K562", "K562"),
+ factor=c("H3k27ac", "H3k27ac", "H3k27ac", "H3k27ac"),
+ ipReads=system.file("extdata", c("Helas3.ip1.bed", "Helas3.ip2.bed", "K562.ip1.bed", "K562.ip2.bed"), package="ChIPComp"),
+ ctReads=system.file("extdata", c("Helas3.ct.bed", "Helas3.ct.bed", "K562.ct.bed", "K562.ct.bed"), package="ChIPComp"),
+ peaks=system.file("extdata", c("Helas3.peak.bed", "Helas3.peak.bed", "K562.peak.bed", "K562.peak.bed"), package="ChIPComp"),
+ )
> design=as.data.frame(lapply(conf[,c("condition", "factor")], as.numeric))-1
> design=as.data.frame(model.matrix(~condition, design))
```

Once we have the configuration data frame and design matrix, we could merge binding sites, detect common binding sites and calculate read counts for each merged binding site.

```
> countSet=makeCountSet(conf, design, filetype="bed", species="hg19", binsize=1000)
```

Currently, if `filetype` is "bam", it is not necessary to specify `species`. However, if `filetype` is "bed", we need to specify `species` either "hg19" or "mm9". We could explore the correlation between ChIP sample and control sample.

```
> plot(countSet)
```



Finally, we perform hy-

pothesis testing on each binding site and print the top differential binding sites.

```
> countSet=ChIPComp(countSet)
> print(countSet)
```

	chr	start	end	ip_c0_r1	ip_c0_r2	ip_c1_r1	ip_c1_r2	ct_c0_r1
24	chr17	41462793	41468134	3626	4356	23	9	7.000000e+00
47	chr15	75309902	75327463	572	684	530	214	4.239901e+00
45	chr7	127281200	127558864	785	1030	4789	2459	9.204285e+00
8	chrX	153029492	153033027	44	36	746	336	2.666667e+00
2	chr19	16995963	17005821	283	280	1994	1054	6.076023e+00
53	chr9	34663975	34667049	418	531	235	173	2.666667e+00
14	chr1	36770095	36773714	194	250	18	11	4.000000e+00
28	chr14	55213729	55245520	249	237	2274	690	7.158971e+00
56	chr5	141389307	141389421	0	0	5	8	6.725728e-05
50	chr4	166244574	166254595	258	307	898	388	8.625731e+00
	ct_c0_r2	ct_c1_r1	ct_c1_r2	commonPeak	pvalue.wald	prob.post		
24	7.000000e+00	1.608187e+00	1.608187e+00	1	0.000000e+00	1.000000		
47	4.239901e+00	1.900000e+01	1.900000e+01	1	0.000000e+00	0.9999912		
45	9.204285e+00	2.125000e+01	2.125000e+01	1	0.000000e+00	0.9999165		
8	2.666667e+00	4.444444e+00	4.444444e+00	1	1.059262e-10	0.9928872		
2	6.076023e+00	1.047368e+01	1.047368e+01	1	2.220446e-16	0.9912081		

```

53 2.666667e+00 3.666667e+00 3.666667e+00      1 2.886580e-15 0.9857750
14 4.000000e+00 2.444444e+00 2.444444e+00      1 1.565828e-09 0.9772349
28 7.158971e+00 2.125000e+01 2.125000e+01      1 2.657446e-09 0.9600753
56 6.725728e-05 1.922092e-04 1.922092e-04      0 1.284754e-02 0.9359081
50 8.625731e+00 1.100000e+01 1.100000e+01      1 4.046903e-10 0.7351641

```

For the example data in the package, we collect 50 common binding sites between H3K27ac Helas3 and K562 cell lines and 10 unique binding sites for each cell line. Therefore, there are 60 binding sites for each cell line. We also extract the ChIP and control counts for each binding site in each condition. The configuration csv file, read bed files and peak bed files are stored in `inst/extdata` directory. The data frame that contains all binding sites and read counts have been pre-calculated and saved as a ChIPComp object `seqData` in `data` directory.

```
> data(seqData)
```

## 4 Session info

---

Here is the output of `sessionInfo` on the system on which this document was compiled:

```
> toLatex(sessionInfo())
```

- R version 3.3.1 (2016-06-21), x86\_64-pc-linux-gnu
- Locale: LC\_CTYPE=en\_US.UTF-8, LC\_NUMERIC=C, LC\_TIME=en\_US.UTF-8, LC\_COLLATE=C, LC\_MONETARY=en\_US.UTF-8, LC\_MESSAGES=en\_US.UTF-8, LC\_PAPER=en\_US.UTF-8, LC\_NAME=C, LC\_ADDRESS=C, LC\_TELEPHONE=C, LC\_MEASUREMENT=en\_US.UTF-8, LC\_IDENTIFICATION=C
- Base packages: base, datasets, grDevices, graphics, methods, parallel, stats, stats4, utils
- Other packages: BiocGenerics 0.20.0, ChIPComp 1.4.0, GenomelnfoDb 1.10.0, GenomicRanges 1.26.0, IRanges 2.8.0, S4Vectors 0.12.0, rtracklayer 1.34.0
- Loaded via a namespace (and not attached): BSgenome 1.42.0, BSgenome.Hsapiens.UCSC.hg19 1.4.0, BSgenome.Mmusculus.UCSC.mm9 1.4.0, Biobase 2.34.0, BiocParallel 1.8.0, BiocStyle 2.2.0, Biostrings 2.42.0, GenomicAlignments 1.10.0, Matrix 1.2-7.1, RCurl 1.95-4.8, Rsamtools 1.26.0, SummarizedExperiment 1.4.0, XML 3.98-1.4, XVector 0.14.0, bitops 1.0-6, grid 3.3.1, lattice 0.20-34, limma 3.30.0, tools 3.3.1, zlibbioc 1.20.0