

The coMET User Guide

Tiphaine Martin ^{*}, Idil Yet [†], Pei-Chien Tsai [‡], Jordana T. Bell [§]

Edited: September 2014; Compiled: April 10, 2015

1 Citation

```
citation(package='coMET')  
  
##  
## To cite 'coMET' in publications use:  
##  
## Martin, T., Erte, I, Tsai, P-C, Bell, J.T. coMET: an R plotting package to  
## visualize regional plots of epigenome-wide association scan results QG14, 2014  
##  
## Martin, T., Yet, I, Tsai, P-C, Bell, J.T. coMET: visualisation of regional  
## epigenome-wide association scan results and DNA co-methylation patterns BMC  
## Bioinformatics, 2015 (accepted)
```

^{*}tiphaine.martin@kcl.ac.uk

[†]idil.yet@kcl.ac.uk

[‡]peichien.tsai@kcl.ac.uk

[§]jordana.bell@kcl.ac.uk

Contents

1	Citation	1
2	Introduction	3
3	Usage	3
3.1	Install the development version of coMET from Bioconductor	5
3.2	Install the version of coMET from gitHub	5
4	Functions in coMET	5
5	File formats	5
5.1	Format of the info file (for option: mydata.file , mandatory)	6
5.2	Format of correlation matrix (for option: cormatrix.file , mandatory)	7
5.3	Format of extra info file (for option: mydata.large.file)	8
5.4	Format of annotation file (for option biofeat.user.file)	8
5.5	Option of config.file	8
6	Creating a plot like the webservice: comet.web	10
6.1	Hidden values of comet.web function	10
7	Creating a plot with the generic function: comet	11
7.1	coMET plot: pvalue plot, annotation tracks, and correlation matrix	11
7.1.1	Input from data files	11
7.1.2	Input from a data frame	13
7.2	coMET plot: annotation tracks and correlation matrix	16
8	Extract the significant correlations between omic features	16
9	Extra information about annotation tracks	18
9.1	Genes and transcripts from ENSEMBL and UCSC	18
9.2	Regulatory elements from ENSEMBL	19
9.3	ChromHMM from UCSC	19
9.4	structureBiomart from Ensembl	20
9.5	ISCA track	20
10	coMET: Shiny web-service	20
10.1	How to use the coMET web-service	20
10.2	How to install the coMET web-service	21
11	SessionInfo	23

2 Introduction

The CoMET package is a web-based plotting tool and R-based package to visualize omic-WAS results in a genomic region of interest, such as EWAS (epigenome-wide association scan). CoMET provides a plot of the EWAS association signal and visualisation of the methylation correlation between CpG sites (co-methylation). The CoMET package also provides the option to annotate the region using functional genomic information, including both user-defined features and pre-selected features based on the Encode project. The plot can be customized with different parameters, such as plot labels, colours, symbols, heatmap colour scheme, significance thresholds, and including reference CpG sites. Finally, the tool can also be applied to display the correlation patterns of other genomic data in any species, e.g. gene expression array data.

coMET generates a multi-panel plot to visualize EWAS results, co-methylation patterns, and annotation tracks in a genomic region of interest. A coMET figure (cf. Fig. 1) includes three components:

1. the upper plot shows the strength and extent of EWAS association signal;
2. the middle panel provides customized annotation tracks;
3. the lower panel shows the correlation between selected CpG sites in the genomic region.

The structure of the plots builds on `snp.plotter` (Luna et al., 2007), with extensions to incorporate genomic annotation tracks and customized functions. coMET produces plots in PDF and Encapsulated Postscript (EPS) format.

The current version of coMET can visualise EWAS results and annotations from a genomic region up to an entire chromosome in the upper and middle panels of the coMET plot. However, the lower panel (co-methylation) is restricted to visualising a maximum of 120 single-CpG or region-based datapoints. This limitation is due to limitations in the size of a standard A4 plot, and may be updated in the near future. However, the user can use the function `comet.list` to extract all significant correlations beyond a given threshold in the dataset from either a genomic region or from an entire chromosome if required.

3 Usage

CoMET requires the installation of R, the statistical computing software, freely available for Linux, Windows, or MacOS. CoMET can be downloaded from bioconductor. Packages can be installed using the `install.packages` command in R. The coMET R package includes two major functions **`comet.web`** and **`comet`** to visualise omci-WAS results.

- The function **`comet.web`** generates output plot with the same settings of genomic annotation tracks as that of the webservice (<http://epigen.kcl.ac.uk/comet> or directly <http://comet.epigen.kcl.ac.uk:3838/coMET/>).
- The function **`comet`** generates output plots with the customized annotation tracks defined by user.

```
source("http://bioconductor.org/biocLite.R")
biocLite("coMET")
```

Currently, coMET is under the development version of Bioconductor, go to the section "Install the development version of coMET from Bioconductor".

After loading from Bioconductor or gitHUB, CoMET can be loaded into a R session using this command:

```

library("coMET")

## Loading required package: grid
## Loading required package: biomaRt
## Loading required package: Guiz
## Loading required package: BiocGenerics
## Loading required package: parallel
##
## Attaching package: 'BiocGenerics'
##
## The following objects are masked from 'package:parallel':
##
##   clusterApply, clusterApplyLB, clusterCall, clusterEvalQ, clusterExport,
##   clusterMap, parApply, parCapply, parLapply, parLapplyLB, parRapply,
##   parSapply, parSapplyLB
##
## The following object is masked from 'package:stats':
##
##   xtabs
##
## The following objects are masked from 'package:base':
##
##   anyDuplicated, append, as.data.frame, as.vector, cbind, colnames, do.call,
##   duplicated, eval, evalq, Filter, Find, get, intersect, is.unsorted, lapply,
##   Map, mapply, match, mget, order, paste, pmax, pmax.int, pmin, pmin.int,
##   Position, rank, rbind, Reduce, rep.int, rownames, sapply, setdiff, sort,
##   table, tapply, union, unique, unlist, unsplit
##
## Loading required package: S4Vectors
## Loading required package: stats4
## Loading required package: IRanges
## Loading required package: GenomeInfoDb
## Loading required package: GenomicRanges
## Loading required package: psych
##
## Attaching package: 'psych'
##
## The following object is masked from 'package:IRanges':
##
##   reflect

```

The configuration file specifies the options for the coMET plot. Example configuration and input files are also provided on <http://epigen.kcl.ac.uk/comet>. Information about the package can viewed from within R using this command:

```

?comet
?comet.web
?comet.list

```

3.1 Install the development version of coMET from Bioconductor

To install coMET from the development version of Bioconductor, the user must install R-devel from <http://www.bioconductor.org/developers/how-to/useDevel/>. Following this installation, use standard Bioconductor command line, e.g.

```
source("http://bioconductor.org/biocLite.R")
biocLite("coMET")
```

3.2 Install the version of coMET from gitHub

Another way to install coMET is to download the package from gitHub <https://github.com/TiphaineCMartin/coMET> and use command line:

```
install.packages("YourPath/coMET_YourVersion.tar.gz",repos=NULL,type="source")
##This is an example
install.packages("YourPath/coMET_0.99.9.tar.gz",repos=NULL,type="source")
```

4 Functions in coMET

Currently, there are 3 main functions:

1. **comet.web** is the pre-customized function that allows us to visualise quickly EWAS (or other omic-WAS) results, annotation tracks, and correlations between features. This version is installed in the Shiny web-service. Currently, it is formatted only to visualise human data.
2. **comet** is the generic function that allows us to visualise quickly EWAS results, annotation tracks, and correlations between features. Users can visualise more personalised annotation tracks and give multiple extra EWAS/omic-WAS results to plot.
3. **comet.list** is an additional function that allows us to extract the values of correlations, the pvalues, and estimates and confidence intervals for all datapoints that surpass a particular threshold.

The functions can read the data input files, but it is also possible to use data frames within R for all data input except for the configuration file. The latter can be achieved with the two functions **comet** and **comet.list**. The structure of the data frames (number of columns, type, format) follows the same rules as for the data input files (cf. section "File formats").

5 File formats

There are five types of files that the user can give to produce the plot:

1. Info file is defined in the option **mydata.file**. It is mandatory and has to be in tabular format with a header.
2. Correlation file is defined in the option **cormatrix.file**. It is mandatory and has to be in tabular format with a header.
3. Extra info files are defined in the option **mydata.file.large**. It is optional, and if provided has to be in tabular format with a header.

4. Annotation info file is defined in the option **biofeat.user.file**. This option exists only in the function **comet.web** and the user should inform also the format to visualise this data with the options `textbfbiofeat.user.type` and `textbfbiofeat.user.type.plot`.
5. Configuration file contains the values of these options instead of defining these by command line. **Each line in the file is one option. The name of the option is in capital letters and is separated by its value by "="**. If there are multiple values such as for the option **list.tracks** or the options for additional data, you need to separated them by a "comma".

5.1 Format of the info file (for option: `mydata.file`, mandatory)

This file is mandatory and has to be in tabular format with an header. Info file can be a list of CpG sites with/without Beta value (DNA methylation level) or direction sign. If it is a site file then it is mandatory to have the 4 columns as shown below with headers in the same order. Beta can be the 5th column(optional) and it can be either a numeric value (positive or negative values) or only direction sign ("+", "-"). The number of columns and their types are defined but the option **mydata.format**.

```
extdata <- system.file("extdata", package="coMET",mustWork=TRUE)
infofile <- file.path(extdata, "cyp1b1_infofile.txt")

data_info <-read.csv(infofile, header = TRUE,
                    sep = "\t", quote = "")
```

```
head(data_info)
```

```
##      TargetID CHR  MAPINFO      Pval
## 1 cg22248750   2 38294160 2.749858e-01
## 2 cg11656478   2 38297759 7.794549e-01
## 3 cg14407177   2 38298023 2.863869e-01
## 4 cg02162897   2 38300537 3.148201e-07
## 5 cg20408276   2 38300586 1.467739e-06
## 6 cg00565882   2 38300707 7.563132e-03
```

Alternatively, the info file can be region-based and if so, the region-based info file must have the 5 columns (see below) with headers in this order. The beta or direction can be included in the 6th column (optional).

```
extdata <- system.file("extdata", package="coMET",mustWork=TRUE)
infoexp <- file.path(extdata, "cyp1b1_infofile_exprGene_region.txt")

data_infoexp <-read.csv(infoexp, header = TRUE,
                      sep = "\t", quote = "")
```

```
head(data_infoexp)
```

```
##              TargetID CHR  MAPINFO.START  MAPINFO.STOP      Pval  BETA
## 1 ENSG00000138061.7_38294652_38298453   2      38294652      38298453 3.064357e-17  +
## 2 ENSG00000138061.7_38301489_38302532   2      38301489      38302532 1.145430e-07  +
## 3 ENSG00000138061.7_38302919_38303323   2      38302919      38303323 1.014050e-08  -
```

In summary, there are 4 possible formats for the info file:

1. **site**: the file has only 4 columns with a header:
 - (a) Name of omic feature
 - (b) Name of chromosome
 - (c) Position of omic feature
 - (d) P-value of omic feature
2. **region**: the file has only 5 columns with a header:
 - (a) Name of omic feature
 - (b) Name of chromosome
 - (c) Start position of omic feature
 - (d) End position of omic feature
 - (e) P-value of omic feature
3. **site_asso**: the file has only 5 columns with a header:
 - (a) Name of omic feature
 - (b) Name of chromosome
 - (c) Position of omic feature
 - (d) P-value of omic feature
 - (e) Direction of association related to this omic feature. It can be the sign or actual value of association effect size.
4. **region_asso**: the file has only 6 columns with a header:
 - (a) Name of omic feature
 - (b) Name of chromosome
 - (c) Start position of omic feature
 - (d) End position of omic feature
 - (e) P-value of omic feature
 - (f) Direction of association related to this omic feature. It can be the sign or actual value of association effect size.

5.2 Format of correlation matrix (for option: `cormatrix.file`, mandatory)

This file is mandatory and has to be in tabular format with an header. The data file used for the correlation matrix is described in the option `cormatrix.file`. This tab-delimited file can take 3 formats described in the option `cormatrix.format`:

1. **cormatrix**: pre-computed correlation matrix provided by the user; Dimension of matrix : CpG_number X CpG_number. Need to put the CpG sites/regions in the ascending order of positions and to have a header with the name of CpG sites/regions;
2. **raw**: Raw data format. Correlations of these can be computed by one of 3 methods Spearman, Pearson, Kendall (option `cormatrix.method`). Dimension of matrix : sample_size X CpG_number. Need to have a header with the name of CpG sites/regions ;
3. **raw_rev**: Raw data format. Correlations of these can be computed by one of 3 methods Spearman, Pearson, Kendall (option `cormatrix.method`). Dimension of matrix : CpG_number X sample_size. Need to have the row names of CpG sites/regions and a header with the name of samples ;

```
extdata <- system.file("extdata", package="coMET", mustWork=TRUE)
corfile <- file.path(extdata, "cyp1b1_res37_rawMatrix.txt")

data_cor <- read.csv(corfile, header = TRUE,
                    sep = "\t", quote = "")
```

```
data_cor[1:6,1:6]
```

```
##      cg22248750 cg11656478 cg14407177 cg02162897 cg20408276 cg00565882
## 1 -0.08636815 -0.4896557  1.6718967  0.52423342  0.1659252  0.224221521
## 2 -0.00107899 -0.6330666  0.3150612 -0.29820805 -0.4339332 -0.007794883
## 3  0.31656883 -0.2610083 -0.4942691  0.04657351  0.1840397  0.313967471
## 4 -0.40914999  0.6816058 -0.3251337 -0.58656175 -0.2069954  0.150719803
## 5  1.29953262  0.3985525  0.1119045  0.81181511  0.1833470  0.194928273
## 6 -1.11948826  0.3035820 -1.2794597 -0.49785237  0.1076348 -0.876011670
```

5.3 Format of extra info file (for option: `mydata.large.file`)

This file is optional file and if provided has to be in tabular format with an header. The extra info files can be described in the option `mydata.large.file` and their format in `mydata.large.format`. Different extra info files are separated by a comma.

This can be another type of info file (e.g expression or replication data) and should follow the same rules as the standard info file.

5.4 Format of annotation file (for option `biofeat.user.file`)

The file is defined in the option `biofeat.user.file` and the format of file is the format accepted by GViz (BED, GTF, and GFF3).

5.5 Option of `config.file`

Each line in the file is one option. The name of the option is in capital letters and is separated by its value by "=". If there are multiple values such as for the option `list.tracks` or options for additional data, these need to be separated them by a "comma". If you would like to make your own changes to the plot you can download the configuration file, make changes to it, and upload it into R as shown in the example below.

The important options of a coMET figure include three components:

1. The upper plot shows the strength and extent of EWAS association signal.
 - **pval.threshold**: Significance threshold to be displayed as a red dashed line
 - **disp.association**: This logical option works only if `mydata.file` contains the effect direction (`mydata.format=site_asso` or `region_asso`). The value can be TRUE or FALSE: if FALSE (default), for each point of data in the p-value plot, the color of symbol is the color of co-methylation pattern between the point and the reference site; if TRUE, the effect direction is shown. If the association is positive, the color is the one defined with the option `color.list`. On the other hand, if the association is negative, the color is the opposed color.
 - **disp.REGION**: This logical option works only if `mydata.file` contains regions (`mydata.format=region` or `region_asso`). The value can be TRUE or FALSE (default). If TRUE, the genomic element will be shown by a continuous line with the color of the element, in addition to the symbol at the center of the region. If FALSE, only the symbol is shown.
2. The middle panel provides customized annotation tracks;


```

## 28                                     disp.legend=TRUE
## 29 list.tracks=geneENSEMBL,CGI,ChromHMM,DNAse,RegENSEMBL,SNP
## 30                                     disp.mult.lab.X=FALSE
## 31                                     image.type=pdf
## 32 image.title="Example a-DMR in CYP1B1 in Adipose tissue"
## 33                                     image.name=cyp1b1_zoom_plus_name_expr
## 34                                     image.size=3.5
## 35                                     genome=hg19
## 36                                     dataset.geneE=hsapiens_gene_ensembl

```

6 Creating a plot like the webservice: comet.web

User can draw coMET via the coMET website (<http://epigen.kcl.ac.uk/comet>). It is possible to reproduce the web service plotting defaults by using the function `comet.web`, for example see Figure 1.

```

extdata <- system.file("extdata", package="coMET", mustWork=TRUE)
myinfofile <- file.path(extdata, "cyp1b1_infofile.txt")
myexpressfile <- file.path(extdata, "cyp1b1_infofile_exprGene_region.txt")
mycorrelation <- file.path(extdata, "cyp1b1_res37_rawMatrix.txt")
configfile <- file.path(extdata, "config_cyp1b1_zoom_4webserver.txt")
comet.web(config.file=configfile, mydata.file=myinfofile,
          cormatrix.file=mycorrelation, mydata.large.file=myexpressfile,
          print.image=FALSE, verbose=FALSE)

```

6.1 Hidden values of comet.web function

Hidden values of `comet.web` function are shown in the section. If these values do not correspond to what you want to visualise, you need to use the function `comet`, as a more generic option.

Option	Value
mydata.type	FILE
mydata.large.type	LISTFILE
cormatrix.type	LISTFILE
disp.cormatrixmap	TRUE
disp.pvalueplot	TRUE
disp.mydata.names	TRUE
disp.connecting.lines	TRUE
disp.mydata	TRUE
disp.type	symbol
biofeat.user.type.plot	histogram
tracks.gviz	NULL
tracks.ggbio	NULL
tracks.trackviewer	NULL
biofeat.user.file	NULL

Continued on next page

Table 1 – continued from previous page

Option	Value
palette.file	NULL
disp.color.bar	TRUE
disp.phys.dist	TRUE
disp.legend	TRUE
disp.marker.lines	TRUE
disp.mult.lab.X	FALSE
connecting.lines.factor	1.5
connecting.lines.adj	0.01
connecting.lines.vert.adj	-1
connecting.lines.flex	0
font.factor	NULL
color.list	red
font.factor	NULL
dataset.gene	hsapiens_gene_ensembl
DATASET.SNP	hsapiens_snp
VERSION.DBSPNP	snp142Common
DATASET.SNP.STOMA	hsapiens_snp_som
DATASET.REGULATION	hsapiens_feature_set
DATASET.STRU	hsapiens_structvar
DATASET.STRU.STOMA	hsapiens_structvar_som
BROWSER.SESSION	UCSC

7 Creating a plot with the generic function: comet

It is possible to create the annotation tracks by Gviz, trackviewer or ggbio, for example see Figure 2. Currently, the Gviz option for annotation tracks, in combination with the heatmap of correlation values between genomic elements, provides the most informative and easy approach to visualize graphics.

7.1 coMET plot: pvalue plot, annotation tracks, and correlation matrix

7.1.1 Input from data files

In this figure 2, we create the different tracks outside to coMET with Gviz. The list of annotation tracks and different files are given to the function coMET.

```
extdata <- system.file("extdata", package="coMET", mustWork=TRUE)
configfile <- file.path(extdata, "config_cyp1b1_zoom_4comet.txt")
myinfofile <- file.path(extdata, "cyp1b1_infofile.txt")
myexpressfile <- file.path(extdata, "cyp1b1_infofile_exprGene_region.txt")
mycorrelation <- file.path(extdata, "cyp1b1_res37_rawMatrix.txt")

chrom <- "chr2"
start <- 38290160
```

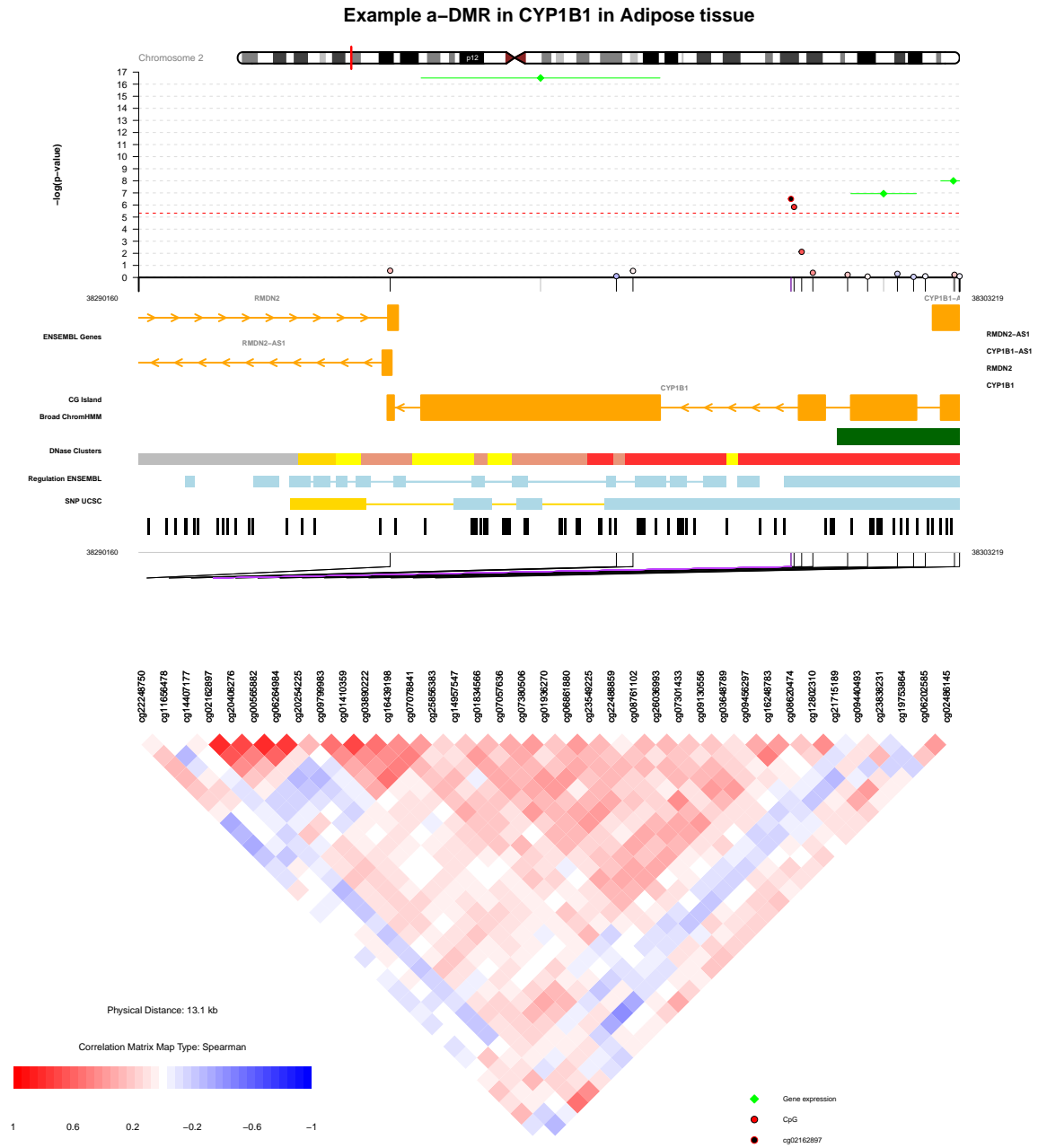


Figure 1: Plot with comet.web function.

```

end <- 38303219
gen <- "hg19"
strand <- "*"

BROWSER.SESSION="UCSC"
mySession <- browserSession(BROWSER.SESSION)
genome(mySession) <- gen
    
```

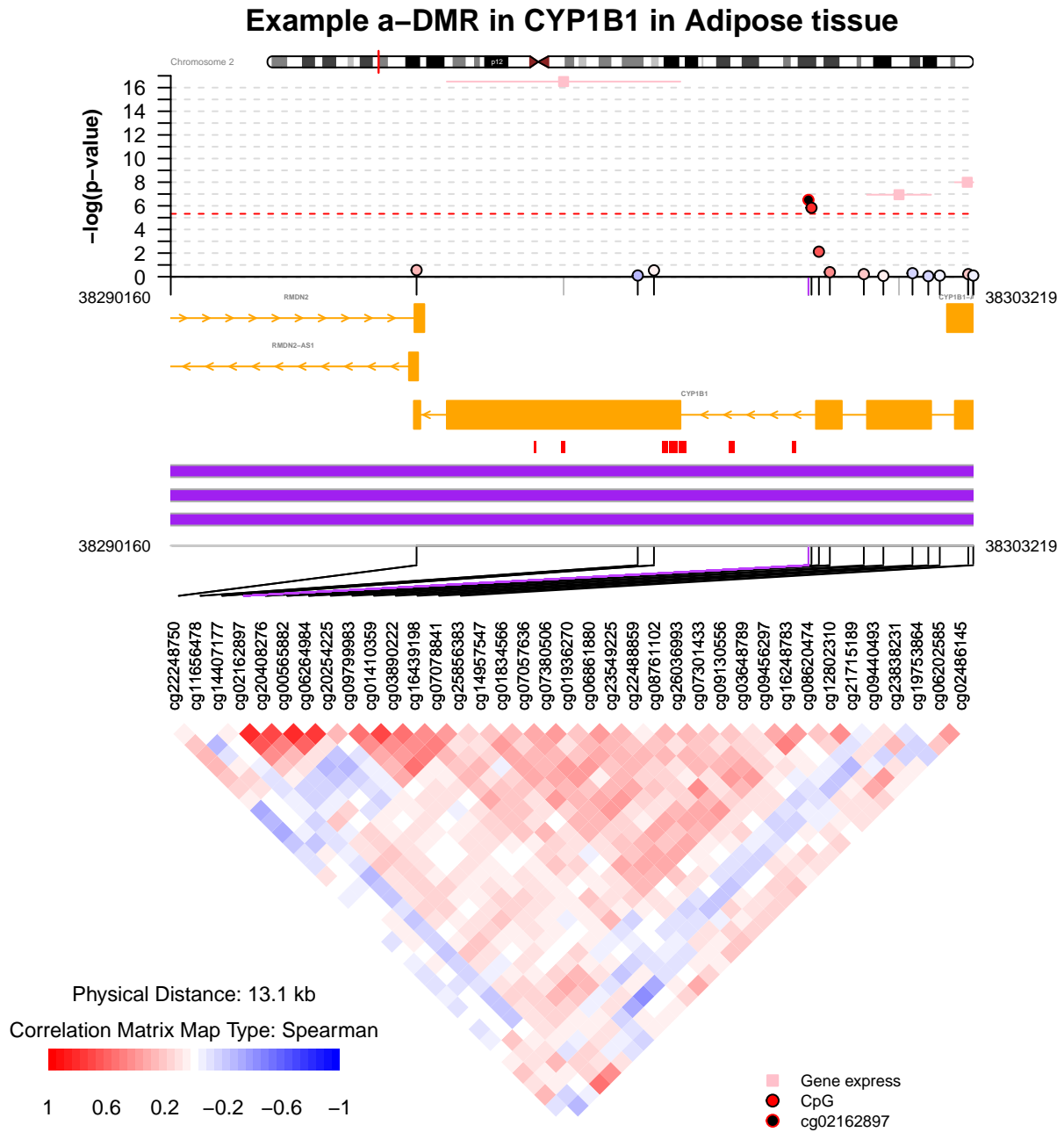



Figure 2: Plot with comet function from files.

```

matrix.expression <- read.delim(myexpressfile, header=TRUE, sep="\t", as.is=TRUE,
                               blank.lines.skip = TRUE, fill=TRUE)
cormatrix.data.raw <- read.delim(mycorrelation, sep="\t", header=TRUE, as.is=TRUE,
                               blank.lines.skip = TRUE, fill=TRUE)

listmatrix.expression <- list(matrix.expression)
listcormatrix.data.raw <- list(cormatrix.data.raw)
    
```

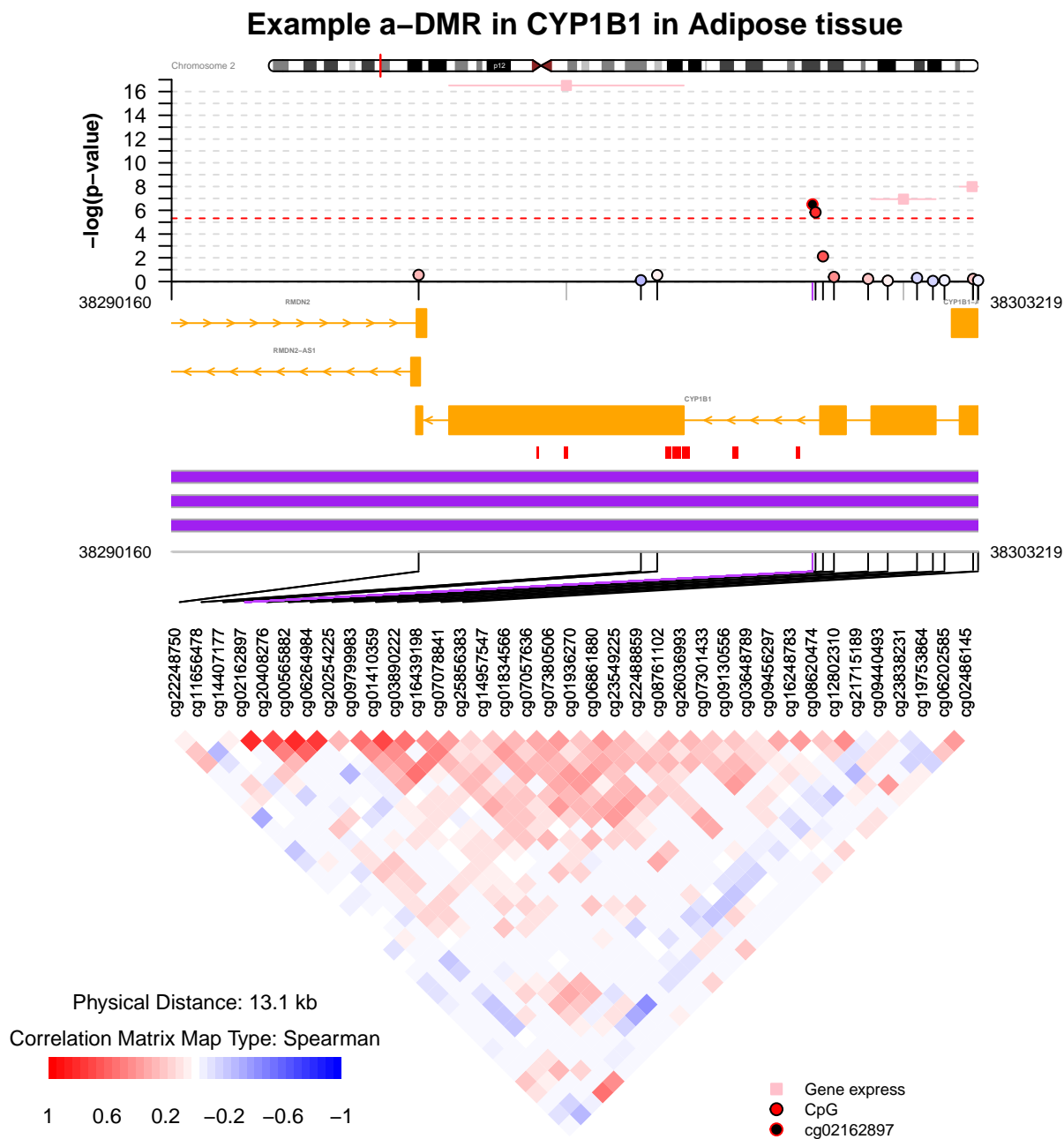


Figure 3: Plot with comet function from matrix data and with a pvalue threshold for the correlation between omics features (here CpG sites).

```
comet(config.file=configfile, mydata.file=matrix.dnamethylation,
mydata.type="dataframe", cormatrix.file=listcormatrix.data.raw,
cormatrix.type="listdataframe", cormatrix.sig.level=0.05,
cormatrix.conf.level=0.05, cormatrix.adjust="BH",
mydata.large.file=listmatrix.expression, mydata.large.type="listdataframe",
tracks.gviz=listgviz, verbose=FALSE, print.image=FALSE)
```

7.2 coMET plot: annotation tracks and correlation matrix

It is possible to visualise only annotation tracks and the correlation between genetic elements. In this case, we need to use the option `disp.pvalueplot=FALSE`, for example see Figure 4.

```
extdata <- system.file("extdata", package="coMET", mustWork=TRUE)
configfile <- file.path(extdata, "config_cyp1b1_zoom_4cometnopval.txt")
myinfofile <- file.path(extdata, "cyp1b1_infofile.txt")
mycorrelation <- file.path(extdata, "cyp1b1_res37_rawMatrix.txt")

chrom <- "chr2"
start <- 38290160
end <- 38303219
gen <- "hg19"
strand <- "*"

genetrack <- genesENSEMBL(gen, chrom, start, end, showId=FALSE)
snptrack <- snpBiomart(chrom, start, end,
                     dataset="hsapiens_snp_som", showId=FALSE)
strutrack <- structureBiomart(chrom, start, end,
                             strand, dataset="hsapiens_structvar_som")
clinVariant <- ClinVarMainTrack(gen, chrom, start, end)
clinCNV <- ClinVarCnvTrack(gen, chrom, start, end)
gwastrack <- GWASTrack(gen, chrom, start, end)
geneRtrack <- GeneReviewsTrack(gen, chrom, start, end)

listgviz <- list(genetrack, snptrack, strutrack, clinVariant,
                clinCNV, gwastrack, geneRtrack)
comet(config.file=configfile, mydata.file=myinfofile, mydata.type="file",
      cormatrix.file=mycorrelation, cormatrix.type="listfile",
      tracks.gviz=listgviz, verbose=FALSE, print.image=FALSE, disp.pvalueplot=FALSE)
```

8 Extract the significant correlations between omic features

CoMET can help to visualise the correlations between omic features with EWAS results and other omic data. In addition, a function `comet.list` can extract the significant correlations according the method (`cormatrix.method`) and significance level (`cormatrix.sig.level`).

The output file has 7 columns:

1. the name of the first omic feature
2. the name of the second omic feature
3. the correlation between the omic features
4. the alpha/2 lower value (e.g. 0.05 (`cormatrix.conf.level`))
5. the alpha/2 upper value (e.g. 0.05 (`cormatrix.conf.level`))
6. the pvalue
7. the pvalue adjusted with the method selected (e.g. Benjamin and Hochberg) (`cormatrix.adjust`)

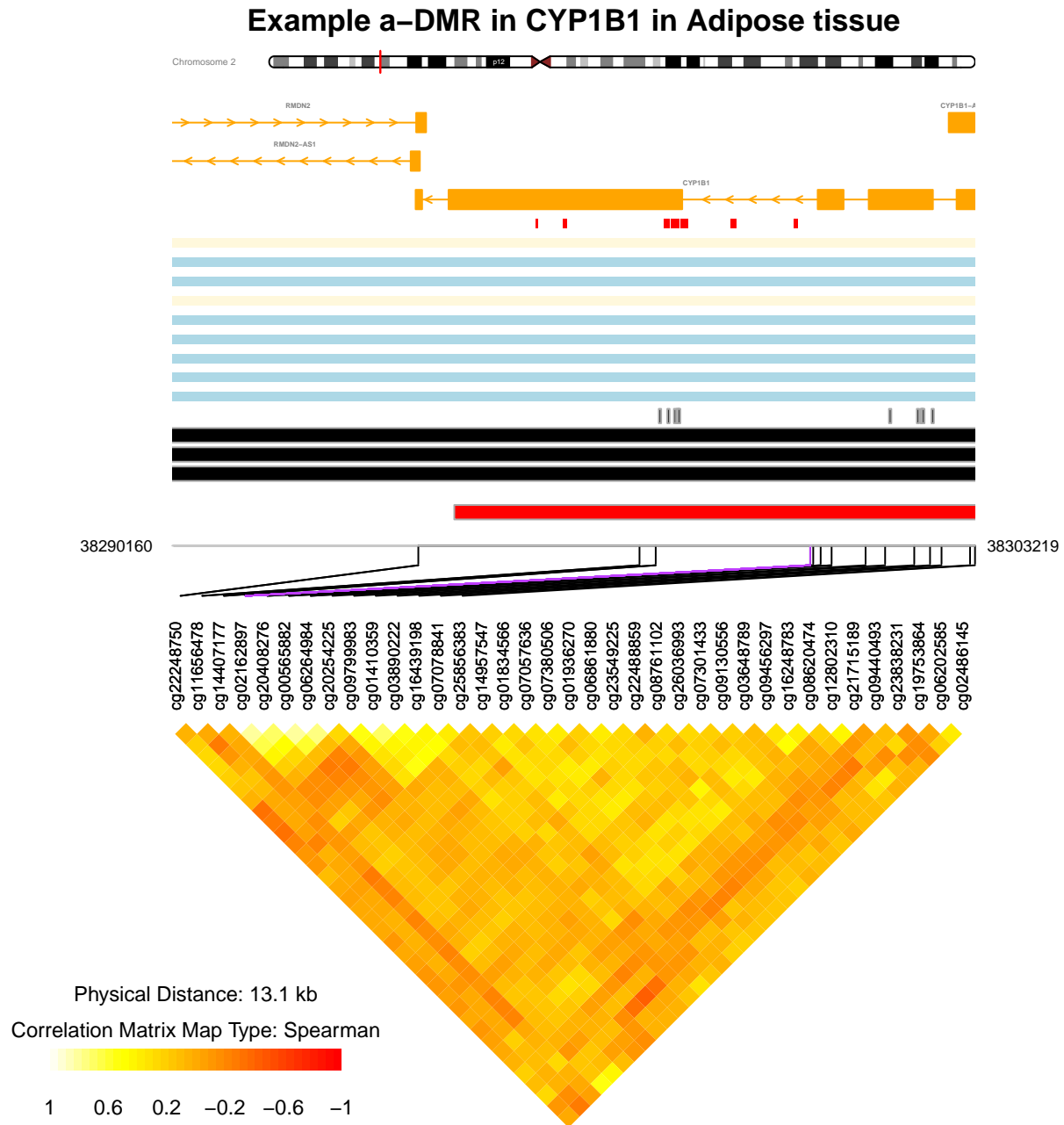


Figure 4: Plot with comet function without pvalue plot.

```

extdata <- system.file("extdata", package="coMET", mustWork=TRUE)
mycorrelation <- file.path(extdata, "cyp1b1_res37_rawMatrix.txt")
myoutput <- file.path(extdata, "cyp1b1_res37_cormatrix_list_BH05.txt")

comet.list(cormatrix.file=mycorrelation, cormatrix.method = "spearman",
           cormatrix.format= "raw", cormatrix.conf.level=0.05,

```

```

cormatrix.sig.level= 0.05, cormatrix.adjust="BH",
cormatrix.type = "listfile", cormatrix.output=myoutput,
verbose=FALSE)

listcorr <- read.csv(myoutput, header = TRUE,
                    sep = "\t", quote = "")
dim(listcorr)
## [1] 336 7
head(listcorr)
##   omicFeature1 omicFeature2 correlation   lowerCI   upperCI      pvalue
## 1 cg22248750   cg14407177  0.2153743 0.11294792 0.3132713 0.00004975019784
## 2 cg22248750   cg02162897  0.2761912 0.17632357 0.3704308 0.00000015755195
## 3 cg22248750   cg20408276  0.2807258 0.18108231 0.3746643 0.00000009649818
## 4 cg22248750   cg00565882  0.2345897 0.13288218 0.3314082 0.000000947899249
## 5 cg22248750   cg06264984  0.1793832 0.07583111 0.2791072 0.00076134404131
## 6 cg22248750   cg09799983 -0.2979454 -0.39070492 -0.1991959 0.00000001382644
##   pvalue.adjusted
## 1 0.0002029592392
## 2 0.0000011789842
## 3 0.0000007472999
## 4 0.0000447731135
## 5 0.0024145482453
## 6 0.0000001261426

```

9 Extra information about annotation tracks

Annotation tracks can be created with Gviz using four different functions:

1. UcsTrack. Different UCSC tracks can be selected for visualisation from the table Browser of UCSC http://genome-euro.ucsc.edu/cgi-bin/hgTables?hgsid=202842745_Dlvit14Q00G6ZPpLoEVABG8aqfrm&c1mammal&org=Human&db=hg19&hgta_group=varRep&hgta_track=cpgIslandExt&hgta_table=0&hgta_regionType=genome&position=chr6%3A32726553-32727053&hgta_outputType=primaryTable&hgta_outFileName=
2. BiomartGeneRegionTrack. A connection should be established to the Biomart database to visualise the Genes data.
3. DataTrack. This should be numerical format data
4. AnnotationTrack. This allows visualisation of any annotation data.

To have more information, it is better to read the Gviz's vignette.

9.1 Genes and transcripts from ENSEMBL and UCSC

The color of the genetic elements is defined by the R package Gviz.

9.2 Regulatory elements from ENSEMBL

The color of regulatory elements from ENSEMBL is defined from the same criteria as ENSEMBL (in 2014). The colors and the list of features can be updated in ENSEMBL and not yet in coMET. Please to contact us if you see a difference.

Currently the colors are :

Omic feature	Color
Promoter Associated	darkolivegreen
CTCF Binding Site	cadetblue1
Gene Associated	coral
Non-Genes Associated	darkgoldenrod1
Predicted Transcribed Region	greenyellow
PoIII Transcription Associated	purple
Enhancer	gold
Transcription Factor Binding Site	darkorchid1
Predicted Weak enhancer/Cis-reg element	yellow
Heterochromatin	wheat4
Open Chromatin	snow3
Promoter Flank	tomato
Repressed/Low Activity	snow4
Unclassified	aquamarine

9.3 ChromHMM from UCSC

The color of regulatory regions from UCSC are defined using the same criteria of UCSC in 2014. The colors and the list of features can be updated in UCSC and not yet in coMET. Please to contact us if you see a difference.

Currently the colors are :

Omic feature	Color
1.Active.Promoter	firebrick1
2.Weak.Promoter	darksalmon
3.Poised.Promoter	blueviolet
4.Strong.Enhancer	Orange
5.Strong.Enhancer	coral
6.Weak.Enhancer	yellow
7.Weak.Enhancer	gold
8.Insulator	cornflowerblue
9.Txn.Transition	darkolivegreen
10.Txn.Elongation	forestgreen
11.Weak.Txn	darkseagreen1
12.Repressed	gainsboro
13.Heterochrom/lo	gray74
14.Repetitive/CNV	gray77

Continued on next page

Table 3 – continued from previous page

Omic feature	Color
15_Repetitive/CNV	gray86

9.4 structureBiomart from Ensembl

These colors are for somatic structural variation and structural variation for any species.

Omic feature	Color
copy_number_variation	cornsilk
inversion	darkolivegreen
translocation	cyan
sequence_alteration	coral
snp	red
insertion	blueviolet
deletion	orange
indel	darkgoldenrod1
substitution	dodgerblue2

9.5 ISCA track

International Standards of Cytogenomic Arrays Consortium defined a set of phenotypes for CNVs. Different colors are defined to represent them.

Omic feature	Color
iscaPathogeni	purple
iscaPathGainCum	red
iscaPathLossCum	blue
iscaCuratedPathogeni	purple
iscaLikelyPathogeni	lightpurple
iscaUncertain	lightgrey
iscaBenign	black
iscaCuratedBenign	black
iscaLikelyBenign	black

10 coMET: Shiny web-service

10.1 How to use the coMET web-service

If you want to use coMET via its webservice, please go to <http://epigen.kcl.ac.uk/comet> and select one of different instances or directly access one of the instances, for example <http://comet.epigen.kcl.ac.uk:3838/coMET/>. We have created different instances of coMET because we did not have access to the pro version of Shiny. All instances use the same version of coMET.

If you use coMET from a Shiny webservice, you do not need to install the coMET package on your computer. The web service is user friendly and requires input files and configuration of the plot. The creation of the coMET plot can take some time because it makes a live connection to UCSC or/and ENSEMBL for the annotation tracks. First, the plot is created on the webpage, and then it can be saved as an output file. For better quality plots please use the download option and the plot will be recreated in a file in pdf or eps format.

10.2 How to install the coMET web-service

These are different steps to install coMET on your Shiny web-service and you need to be root to install it.

1. You can install an instance of Shiny <http://shiny.rstudio.com/>.
2. You need to also install R, Bioconductor and the coMET package.
3. In Shiny's folder (e.g. `/var/shiny-server/www`), you can create a folder called "COMET".
4. Following this, you can install the two coMET scripts in `www` of the coMET package, within this new folder.
5. You need to change owner and permissions to access this folder. Only the user called Shiny can access it.


```
chmod 755 /var/shiny-server/www/COMET
chown shiny:shiny /var/shiny-server/www/COMET
```
6. You need now to update the configuration file of Shiny (e.g. `/etc/shiny-server/shiny-server.conf`).
7. You need to change owner and the permission to access this file


```
chmod 744 /etc/shiny-server/shiny-server.conf
chown shiny:shiny /etc/shiny-server/shiny-server.conf
```
8. At the end, you should restart the service Shiny via the command line: `sudo restart shiny-server`

Your Shiny's configuration file:

```
run_as shiny;
# Define a top-level server which will listen on a port
server {
# Instruct this server to listen on port 3838
listen 3838;
# Define the location available at the base URL
location / {
# Run this location in 'site_dir' mode, which hosts the entire directory
# tree at '/srv/shiny-server'
site_dir /var/shiny-server/www;

# Define where we should put the log files for this location
log_dir /var/shiny-server/log;

# Should we list the contents of a (non-Shiny-App) directory when the user
# visits the corresponding URL?
directory_index off;

# app_init_timeout 3600;
# app_idle_timeout 3600;
}
```

}

11 SessionInfo

The following is the session info that generated this vignette:

```
toLatex(sessionInfo())
```

- R version 3.1.3 (2015-03-09), x86_64-pc-linux-gnu
- Locale: LC_CTYPE=en_GB.UTF-8, LC_NUMERIC=C, LC_TIME=en_US.UTF-8, LC_COLLATE=en_GB.UTF-8, LC_MONETARY=en_US.UTF-8, LC_MESSAGES=en_GB.UTF-8, LC_PAPER=en_US.UTF-8, LC_NAME=C, LC_ADDRESS=C, LC_TELEPHONE=C, LC_MEASUREMENT=en_US.UTF-8, LC_IDENTIFICATION=C
- Base packages: base, datasets, graphics, grDevices, grid, methods, parallel, stats, stats4, utils
- Other packages: BiocGenerics 0.12.1, biomaRt 2.22.0, coMET 0.99.10, GenomeInfoDb 1.2.4, GenomicRanges 1.18.4, Gviz 1.10.9, IRanges 2.0.1, knitr 1.9, psych 1.5.1, S4Vectors 0.4.0, XVector 0.6.0
- Loaded via a namespace (and not attached): acepack 1.3-3.3, AnnotationDbi 1.28.1, base64enc 0.1-2, BatchJobs 1.5, BBmisc 1.9, Biobase 2.26.0, BiocParallel 1.0.3, BiocStyle 1.4.1, Biostrings 2.34.1, biovizBase 1.14.1, bitops 1.0-6, brew 1.0-6, BSgenome 1.34.1, checkmate 1.5.1, cluster 2.0.1, codetools 0.2-11, colorspace 1.2-4, colortools 0.1.5, DBI 0.3.1, dichromat 2.0-0, digest 0.6.8, evaluate 0.5.5, fail 1.2, foreach 1.4.2, foreign 0.8-63, formatR 1.0, Formula 1.2-0, GenomicAlignments 1.2.1, GenomicFeatures 1.18.3, GGally 0.5.0, ggbio 1.14.0, ggplot2 1.0.0, graph 1.44.1, gridExtra 0.9.1, gtable 0.1.2, gWidgets 0.0-54, gWidgetstcltk 0.0-55, hash 2.2.6, highr 0.4, Hmisc 3.14-6, iterators 1.0.7, lattice 0.20-30, latticeExtra 0.6-26, MASS 7.3-37, matrixStats 0.14.0, mnormt 1.5-1, munsell 0.4.2, nnet 7.3-9, OrganismDbi 1.8.0, pbapply 1.1-1, plyr 1.8.1, proto 0.3-10, RBGL 1.42.0, RColorBrewer 1.1-2, Rcpp 0.11.4, RCurl 1.95-4.5, reshape 0.8.5, reshape2 1.4.1, rpart 4.1-9, Rsamtools 1.18.2, RSQLite 1.0.0, rtracklayer 1.26.2, scales 0.2.4, sendmailR 1.2-1, splines 3.1.3, stringr 0.6.2, survival 2.38-1, tcltk 3.1.3, tools 3.1.3, trackViewer 1.2.0, VariantAnnotation 1.12.9, XML 3.98-1.1, zlibbioc 1.12.0